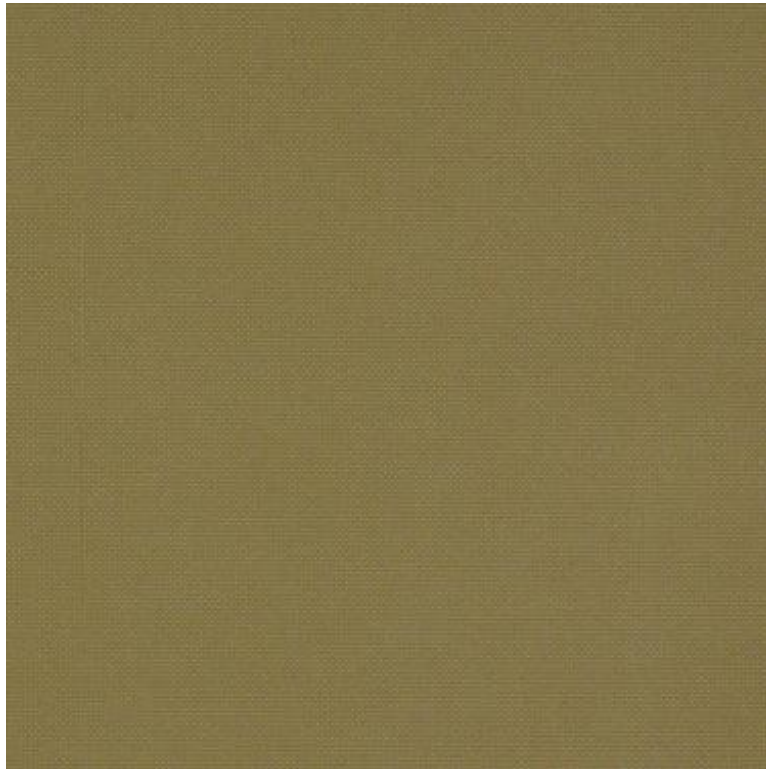




# Cleaning Guide

---



**Pattern:** Silica Tech

**Color:** Willow

**Product Number:** 09128007

**Content:** 100% Silicone

## **WS General Recommendations**

- Clean with water-based foam or upholstery cleaner or dry cleaning solvents
- Do not saturate with liquids
- Do not get the furniture wet

## **Regular Maintenance**

- Clean monthly with a clean, soft, colorfast, damp, soapy cloth or sponge and rinse with clean water

## **Stain Treatment and Spot Cleaning**

A professional cleaning service is recommended

Treat stains quickly

- It will become increasingly difficult to remove the longer a stain is allowed to set
- Pretest any cleaning method or agent in a small hidden inconspicuous area
- Several less concentrated applications are less damaging than one concentrated application

Remove fluids immediately by blotting with a clean, colorfast, absorbent cloth

Flush stain with water and dry with clean cloth

Remove solid or semi-solid substances

- Using a flat object, remove as much of the stain as possible
- After removal, vacuum thoroughly using the proper attachments before cleaning with an agent

Abrasive household cleansers and steel wool should be avoided



# Cleaning Guide

- Step 1:** Silica can be cleaned very simply with a clean, soft, colorfast, damp cloth or sponge
- Step 2:** If stain persists, wipe using a clean, soft, colorfast, damp, soapy cloth or sponge and rinse with clean water
- Step 3:** If stain persists, consult the chart below  
If using bleach, up to a 4:1 water to bleach solution may be used  
If using other agents, please follow manufacturers recommended instructions
- Step 4:** Thoroughly rinse with water and pat dry

Silica / Silica Tech / Silica Leather				
Stain	Water	Solvent	Bleach	Virox
Paint / Ink	5/5	5/5	5/5	5/5
Permanent Marker	5/4.5	5/5	5/5	5/5
Ketchup, Mustard	5/2.5	5/2.5	5/5	5/5
Coffee	5/4	5/4.5	5/5	5/5
Suntan Lotion	5/5	5/5	5/5	5/5
Blood, Urine, Betadine	5/5	5/5	5/5	5/5
Lipstick, Mascara	5/5	5/5	5/5	5/5
Chocolate	5/5	5/5	5/5	5/5
Denim	5/5	5/5	5/5	5/5

## Rating System

- Class 5** - No evidence of stain present
- Class 4** - Slight evidence of stain present
- Class 3** - Noticeable evidence of stain present
- Class 2** - Considerable evidence of stain present
- Class 1** - Excessive evidence of stain present

## Bleach Cleanable

To disinfect spray a 4:1 ratio water/bleach mixture on the fabric and allow to linger for the time specified by the Centers for Disease Control and Prevention.

## Rinse all cleaning agents thoroughly with water and wipe with a soft cloth

- Residue left by cleaning agents will degrade and shorten the life and/or affect the product's appearance if not removed.

## Approved Cleaners

This list represents some of the most common options available and is not intended to be comprehensive.

- 3M Neutral Cleaner 3H
- Accel Prevention
- Accel TB
- Asepticare TB + II
- Birex SE



# Cleaning Guide

---

## Approved Cleaners

This list represents some of the most common options available and is not intended to be comprehensive.

- Citrace
- Clorox Bleach (4:1 water to bleach)
- Clorox Healthcare Bleach Germicidal Cleaner
- Clorox Healthcare Hydrogen Peroxide Cleaner
- Coverage Spray HB (Steris)
- Dispatch
- Isopropyl Alcohol
- Lysol Advanced Wipes
- Lysol Spray
- Optim 33 TB Wipes
- Oxivir TB
- Oxycide
- PDI Sani-Cloth HB Germicidal
- PDI Super Sani-Cloth
- Peridox RTU
- Perisept
- Rescue
- Sani-wipes
- Virex II 256
- Virox 5 Concentrate
- Virox 5 RTU
- Wexcide

The cleaning recommendations above are a guide to help in the maintenance of Momentum Textiles fabrics. They are supplied without warranty, representation or inducement of any kind, including, but not limited to, the implied warranties of merchantability and fitness for particular use or purpose. Momentum Textiles can neither guarantee, nor take responsibility for specific results.

Under no circumstances shall Momentum be liable for any incidental, consequential, or other damage resulting from negligence, misuse, mishandling or exposure of any chemicals used in connection with maintenance. Information relating to chemicals/cleaning solvents, environmental use, and human exposure should be reviewed with appropriate suppliers. Users must read the product specifications and determine appropriateness for specific applications. All label instructions on their use and precautions should be followed.